

# THE CRODON CHRONICLES

## Helpful Tips for Using CRODON® Wear Plate

www.crodonwearplate.com

Volume 111



Tubular coal chutes fabricated from CRODON Wear Plate

### In this issue:

CRODON and limestone 1

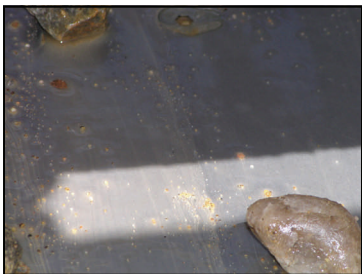
Better Corners for Better Flow 1

Placing an Order 2

### Upcoming Events:

Come see us at the  
ConExpo-Con/Agg  
Show March 11-15,  
2008.

Booth # S-12732



CRODON Wear Plate in vibrator feeder used in a quarry.

**CRODON® Wear Plate**

Tough. And Slick.

## Improved Crushed Limestone Handling

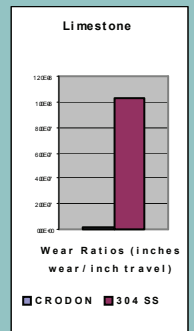
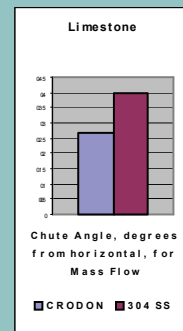


Because limestone is both sticky and abrasive, it can be a difficult material to handle effectively. Most abrasion resistant liner materials don't allow limestone to flow well and easy flow liner materials, like UHMW, don't tolerate abrasion or gauging. Traditionally, 304 stainless steel offered the best compromise for these

dual needs—until now. Chromium Corporation recently conducted testing with Jenike & Johanson to compare CRODON Wear Plate to 304 stainless steel.

### The tests conclusively showed CRODON's superiority in both abrasion resistance and material flow.

Abrasion testing showed that CRODON the 0.020" CRODON surface was approximately 50X more wear resistant than 304 stainless steel, giving it a life cycle equivalent to approximately 1" of 304 stainless. After both surfaces were worn in, CRODON allowed unrestricted material flow at an angle 30% shallower than for 304 stainless. The same results were also found when checking specifically for coefficient of sliding friction. An additional benefit pointed out by the tests is that CRODON's flow characteristics, unlike most other liner materials, change very little with wear and aging. This is important because if a surface becomes more frictional, flow could change from mass flow to funnel flow or no flow. On the other hand, if a surface becomes less frictional, the increased material velocity can result in spillage, dust generation, accelerated wear, or other problems. CRODON performs as designed throughout its life cycle.



## Eliminate Recessed Corners for Better Flow

A frequently missed opportunity when designing or rebuilding chutes and hoppers is eliminating recessed corners. When material sticks, it usually initiates in corners, especially recessed corners, and then bridges across the liner face. Blocking off corners with strips of CRODON Wear Plate replaces this problem area with an abrasion resistant, non-stick surface.

CRODON Strips should be at 3" to 6" wide. Base steel should be 3/8" to 1/2" thick to allow more robust welding parameters. Optimal width will vary by the material being handled, wall slope, depth of corner, and open area of the chute or hopper being modified. Ideally, strips in hoppers and short chutes will be wider at the top than at the bottom to increase the effective slope in the corner.

This fairly simple modification can go a long way toward making chutes and hoppers more efficient and less prone to sticking and plugging.

# Chromium Corporation

14911 Quorum Drive  
Suite 600  
Dallas, TX 75254-1491

Tel: 216-271-4910

Toll Free: 1/888-FINISHES

E-mail: [ccinfo@chromcorp.com](mailto:ccinfo@chromcorp.com)

<http://www.crodonwearplate.com>



**CRODON and AR400 blasted with coal slag. The CRODON showed no wear while the AR400 showed over 1/4" of wear.**

**CRODON® Wear Plate**

Tough. And Slick.

## Ordering CRODON Wear Plate

A number of new customers have joined the CRODON family in the last several months and a number more are scheduling use in the near future. At times this has led to confusion about how to place an order and obtain material.

### Pricing & Quotations:

For most applications, you will have a distributor who can provide this information. If you are a new distributor or do not have a designated distributor in your area, your primary contacts are Mike Taylor (Director of Marketing) and Steve Martin (Western Region Sales Manager). Mike can be contacted at (214) 215-6939 and Steve at (702) 466-4470.

Quotes for special projects require drawings with tolerances, desired CRODON product group (Standard, Plus, Premier, or Advantage), and quantity.

### Setting Up Your Account:

Before placing an order, we'll need to set up your file. Mike or Steve can send you our credit application which will need to be returned to the attention of Fred Herauf at fax number (972) 851-0543.

### Placing an Order:

Purchase orders need to be sent to the attention of our Customer Service Manager, Kathryn Linen, in our offices in Cleveland, OH.

She will need to know your preferred shipper and ship to address. Her fax number is (216) 429-0637.

### Terms and Conditions:

All orders are FOB our facility in Cleveland, OH. We can have freight 3rd party billed but we do not pre-pay and add freight. Unless otherwise stated, all terms are net 30 days from the date of invoice and we do not accept credit card payments. All terms and prices, unless otherwise stated on a quotation, are subject to change without notice.